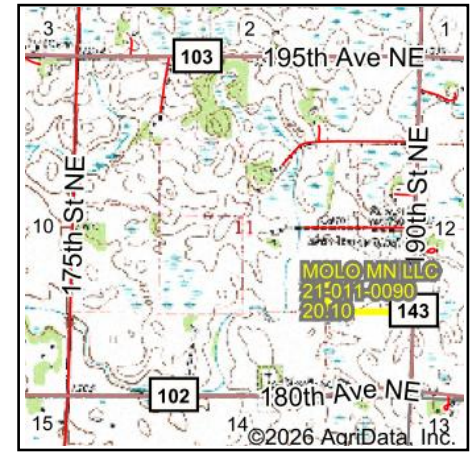
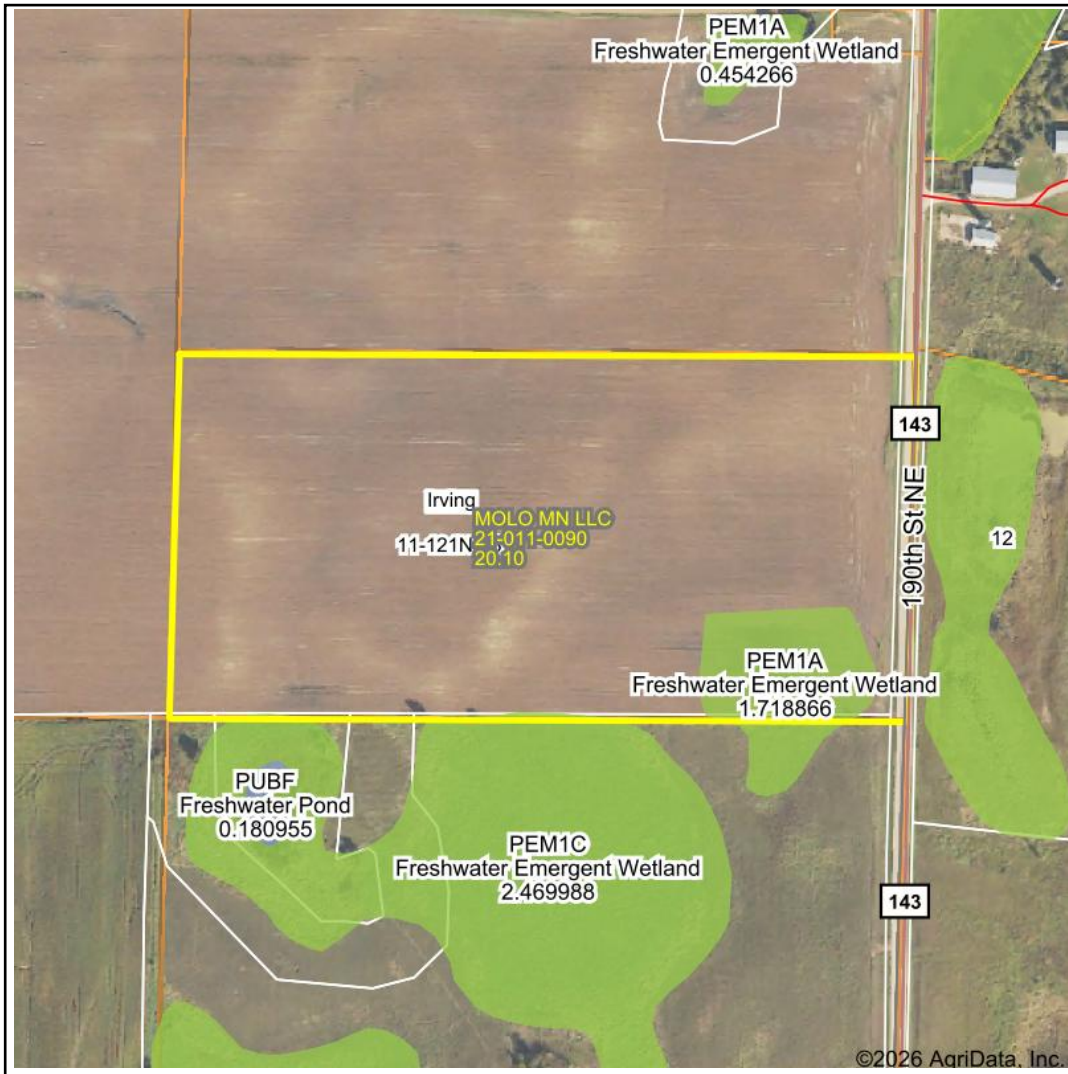


# Wetlands Map



State: **Minnesota**  
 Location: **11-121N-33W**  
 County: **Kandiyohi**  
 Township: **Irving**  
 Date: **2/4/2026**



Maps Provided By:



© AgriData, Inc. 2025

www.AgriDataInc.com



0ft 398ft 795ft

| Classification Code | Type                        | Acres |
|---------------------|-----------------------------|-------|
| PEM1A               | Freshwater Emergent Wetland | 1.45  |
| Total Acres         |                             | 1.45  |

Data Source: National Wetlands Inventory website. U.S. DoI, Fish and Wildlife Service, Washington, D.C. <http://www.fws.gov/wetlands/>