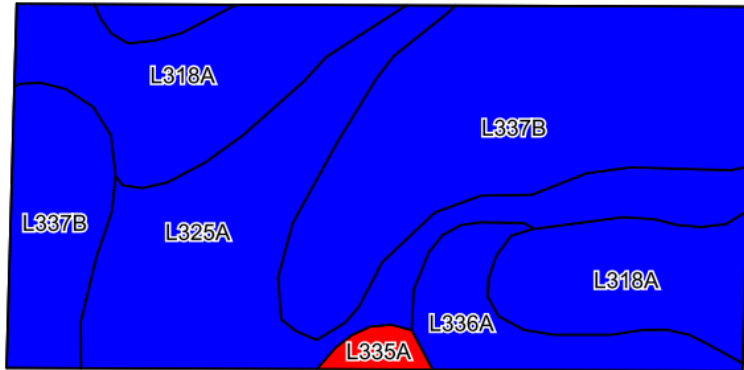
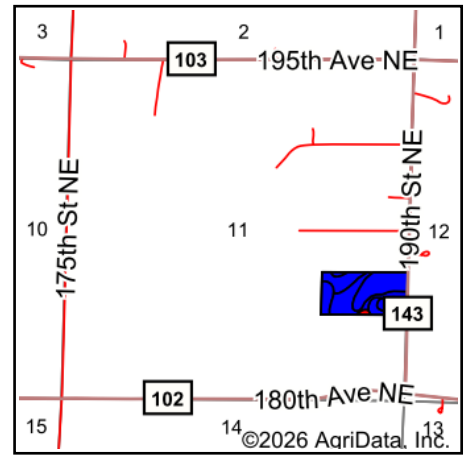


Soils Map



©2026 AgriData, Inc.

Soils data provided by USDA and NRCS.



State: **Minnesota**
 County: **Kandiyohi**
 Location: **11-121N-33W**
 Township: **Irving**
 Acres: **20.1**
 Date: **2/4/2026**



Maps Provided By:



© AgriData, Inc. 2025

www.AgriDataInc.com



Area Symbol: MN067, Soil Area Version: 24

Code	Soil Description	Acres	Percent of field	PI Legend	Restrictive Layer	Soil Drainage	Non-Irr Class *c	Productivity Index	*n NCCPI Overall
L337B	Wadenill-Sunburg complex, 2 to 6 percent slopes	8.22	40.9%		> 6.5ft.	Well drained	Ile	88	71
L325A	Crowriver-Lundlake complex, 0 to 2 percent slopes	5.28	26.3%		> 6.5ft.	Poorly drained	Ilw	85	75
L318A	Lundlake silty clay loam, 0 to 1 percent slopes	4.85	24.1%		> 6.5ft.	Very poorly drained	Illw	86	88
L336A	Arctander, overwash-Arctander complex, 1 to 4 percent slopes	1.48	7.4%		> 6.5ft.	Somewhat poorly drained	Ilw	88	88
L335A	Klossner soils, lundlake catena, 0 to 1 percent slopes	0.27	1.3%		> 6.5ft.	Very poorly drained	Vlw	15	94
Weighted Average							2.30	85.7	*n 77.7

*n: The aggregation method is "Weighted Average using all components"

*c: Using Capabilities Class Dominant Condition Aggregation Method