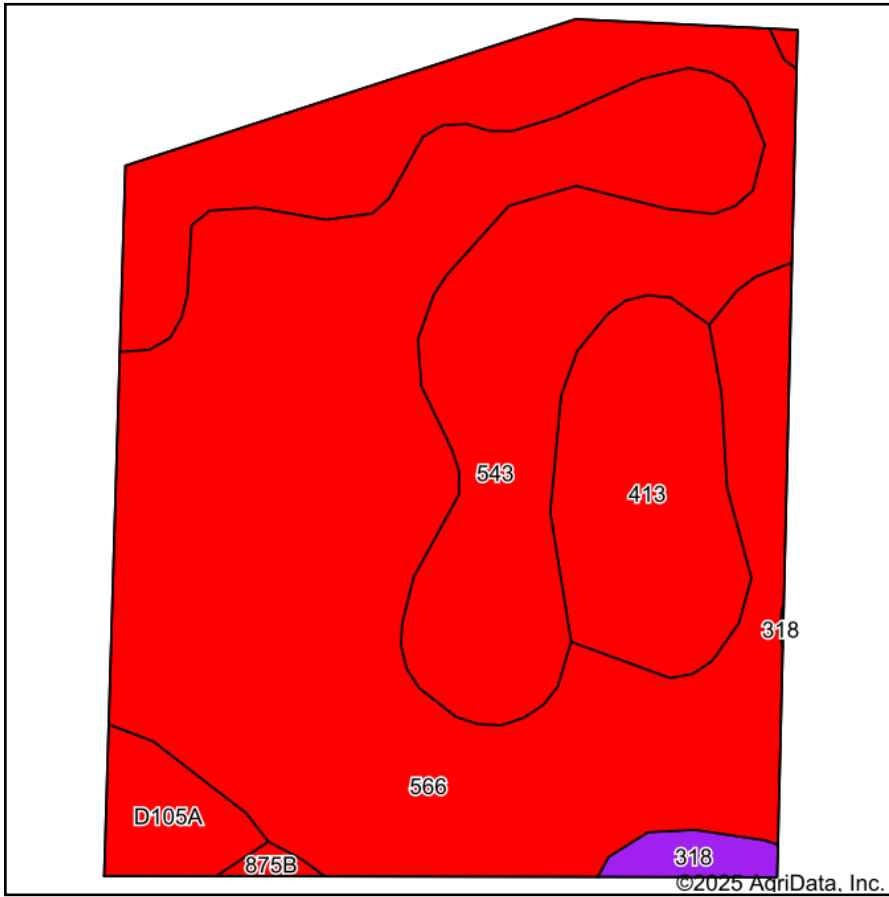
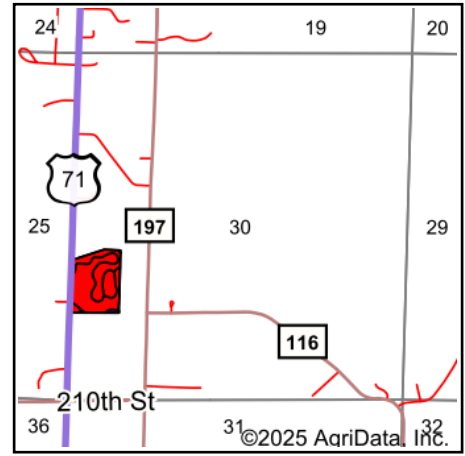


# Soils Map



Soils data provided by USDA and NRCS.



State: **Minnesota**  
 County: **Stearns**  
 Location: **30-123N-34W**  
 Township: **Crow River**  
 Acres: **15.5**  
 Date: **8/22/2025**



Maps Provided By:



Area Symbol: MN145, Soil Area Version: 22

Code	Soil Description	Acres	Percent of field	PI Legend	Restrictive Layer	Soil Drainage	Non-Irr Class *c	Irr Class *c	Range Production (lbs/acre/yr)	Productivity Index	*n NCCPI Overall
566	Regal loam	8.71	56.2%		> 6.5ft.	Poorly drained	IIIw		0	44	50
543	Markey muck, occasionally ponded, 0 to 1 percent slopes	4.39	28.3%		> 6.5ft.	Very poorly drained	VIw		0	5	47
413	Osakis loam, 0 to 2 percent slopes	1.68	10.8%		> 6.5ft.	Moderately well drained	IIIs	IIIs	0	45	47
D105A	Arvilla sandy loam, 0 to 2 percent slopes	0.46	3.0%		> 6.5ft.	Somewhat excessively drained	IIIs	IIIs	0	44	44
318	Marysland loam, occasionally ponded, 0 to 1 percent slopes	0.20	1.3%		> 6.5ft.	Very poorly drained	IIIw		5218	55	38
875B	Estherville-Hawick complex, 2 to 6 percent slopes	0.06	0.4%		> 6.5ft.	Somewhat excessively drained	IIIs	IIIs	0	43	38
<b>Weighted Average</b>							<b>3.85</b>	<b>*-</b>	<b>67.3</b>	<b>33.2</b>	<b>*n 48.4</b>

\*n: The aggregation method is "Weighted Average using all components"

\*c: Using Capabilities Class Dominant Condition Aggregation Method

\*- Irr Class weighted average cannot be calculated on the current soils data due to missing data.