

**Real Estate  
Auction**

# **2 BEDROOM & 2.5 BATHROOM HOME 3± ACRES**

168 Creekside Way, Metter, GA  
Candler Co.

**OPEN HOUSE DATES**  
Thursday, August 14th  
& Monday, August 18th  
4:00-6:00PM



**BIDDING ENDS AUGUST 20<sup>TH</sup>**



**Joe Lanier,  
Auction Manager**

912.531.7007

joe@southauctiongroup.com

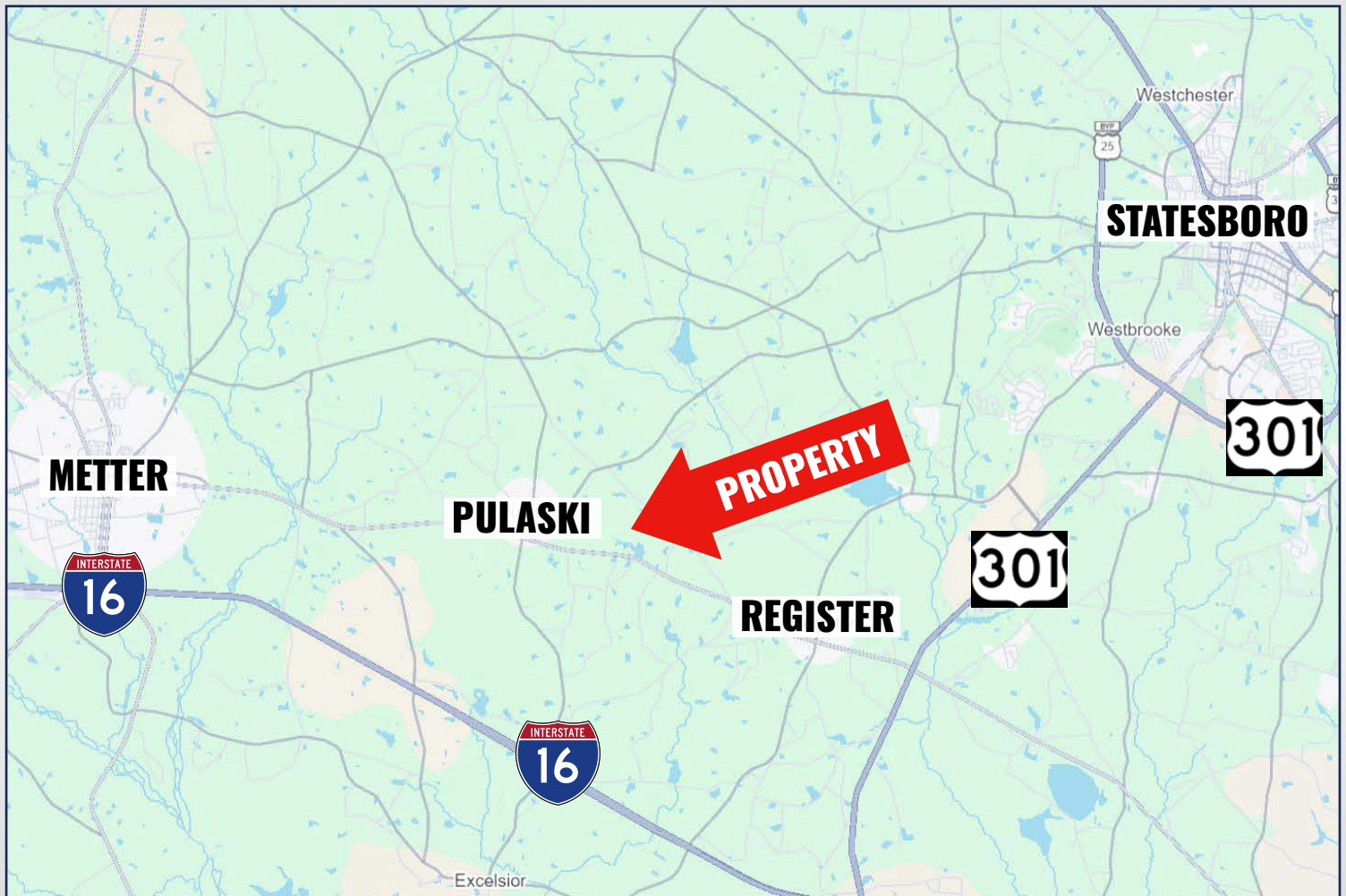
**SouthAuction.com**



**SOUTH  
AUCTION**



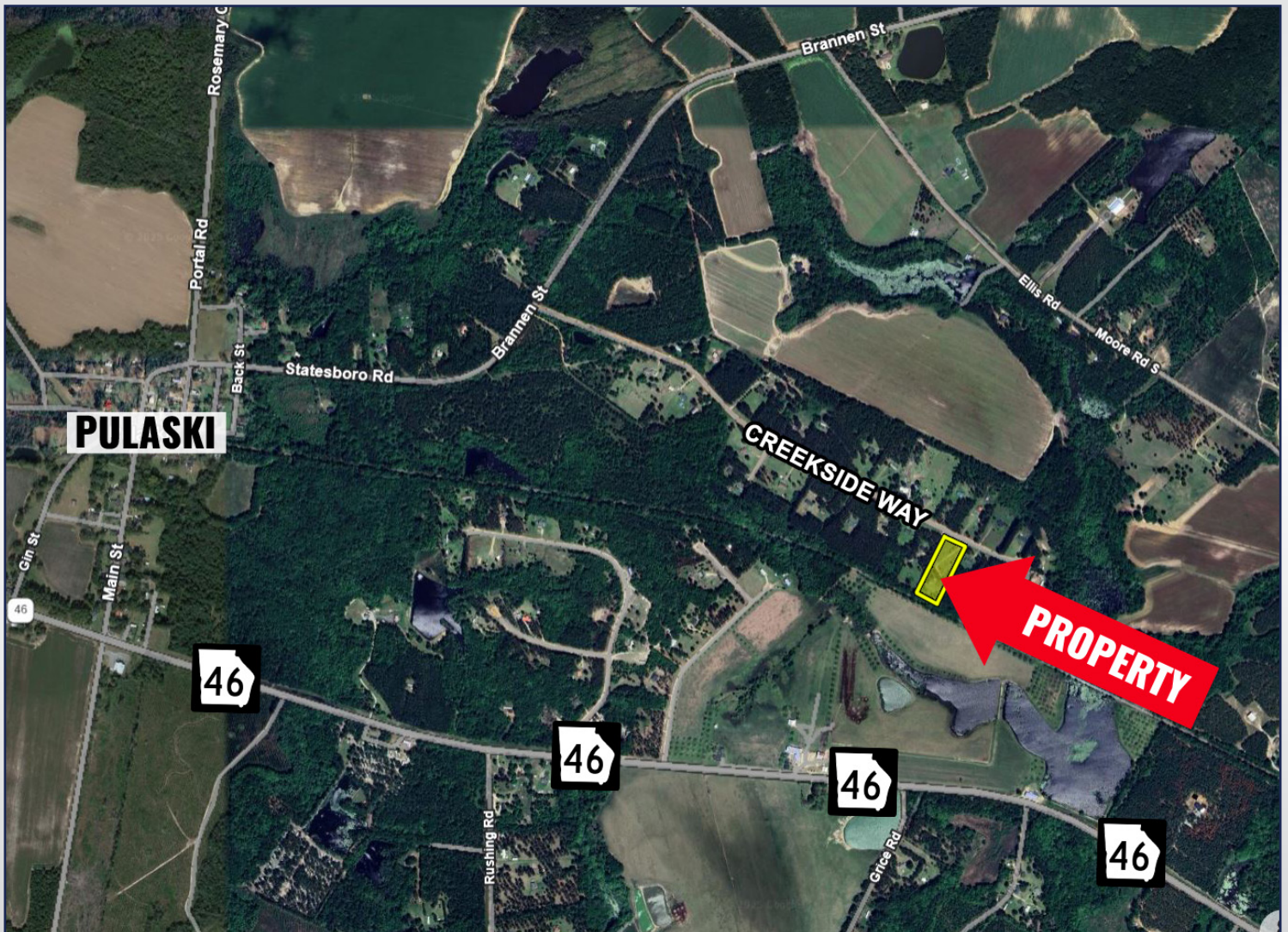
# PROPERTY LOCATION







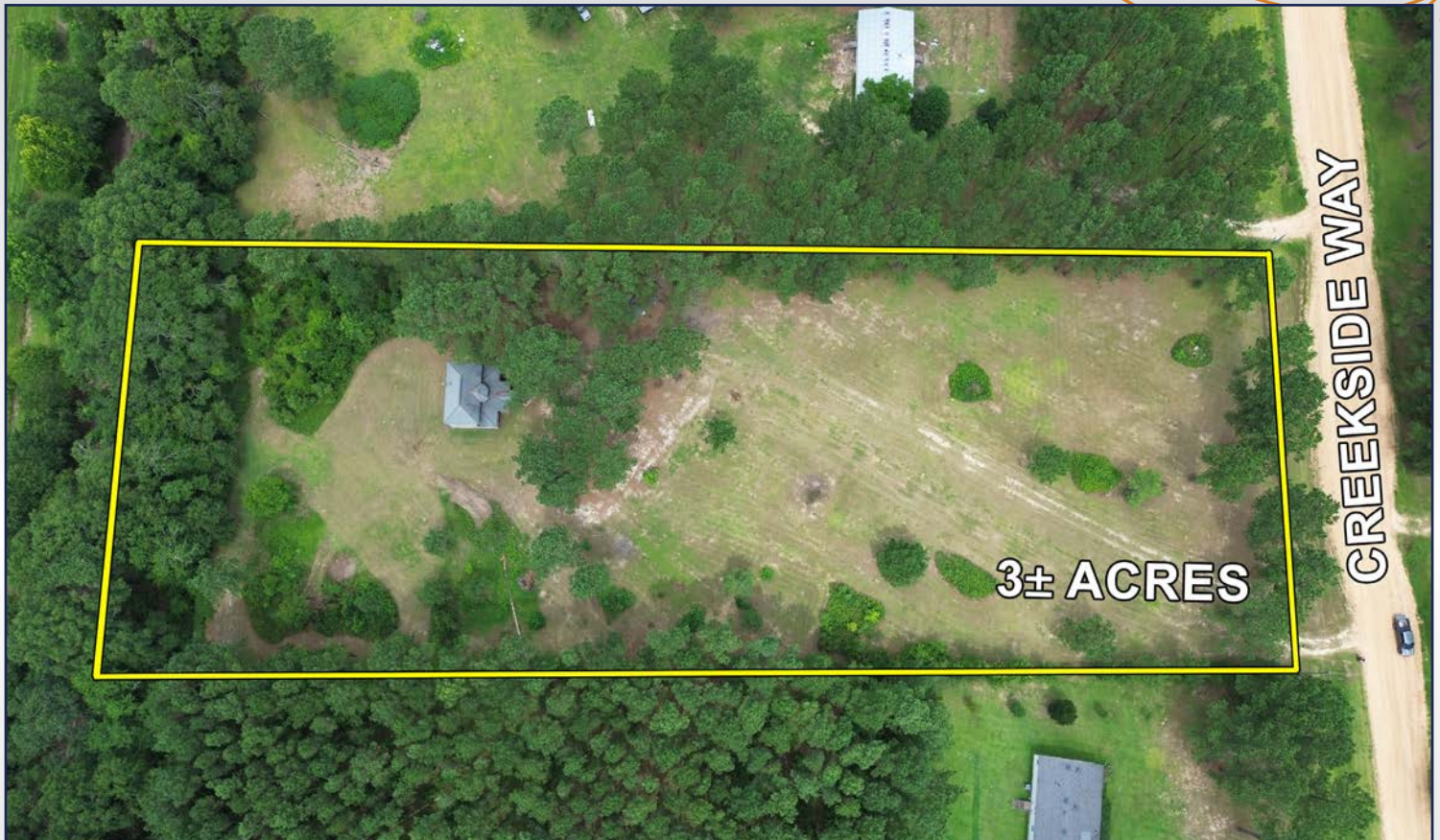
# LOCATION MAP







## AERIAL MAP



- **2 Bedrooms, 2.5 bathrooms**

**OPEN HOUSE DATES**  
**Thursday, August 14th**  
**& Monday, August 18th**  
**4:00-6:00PM**



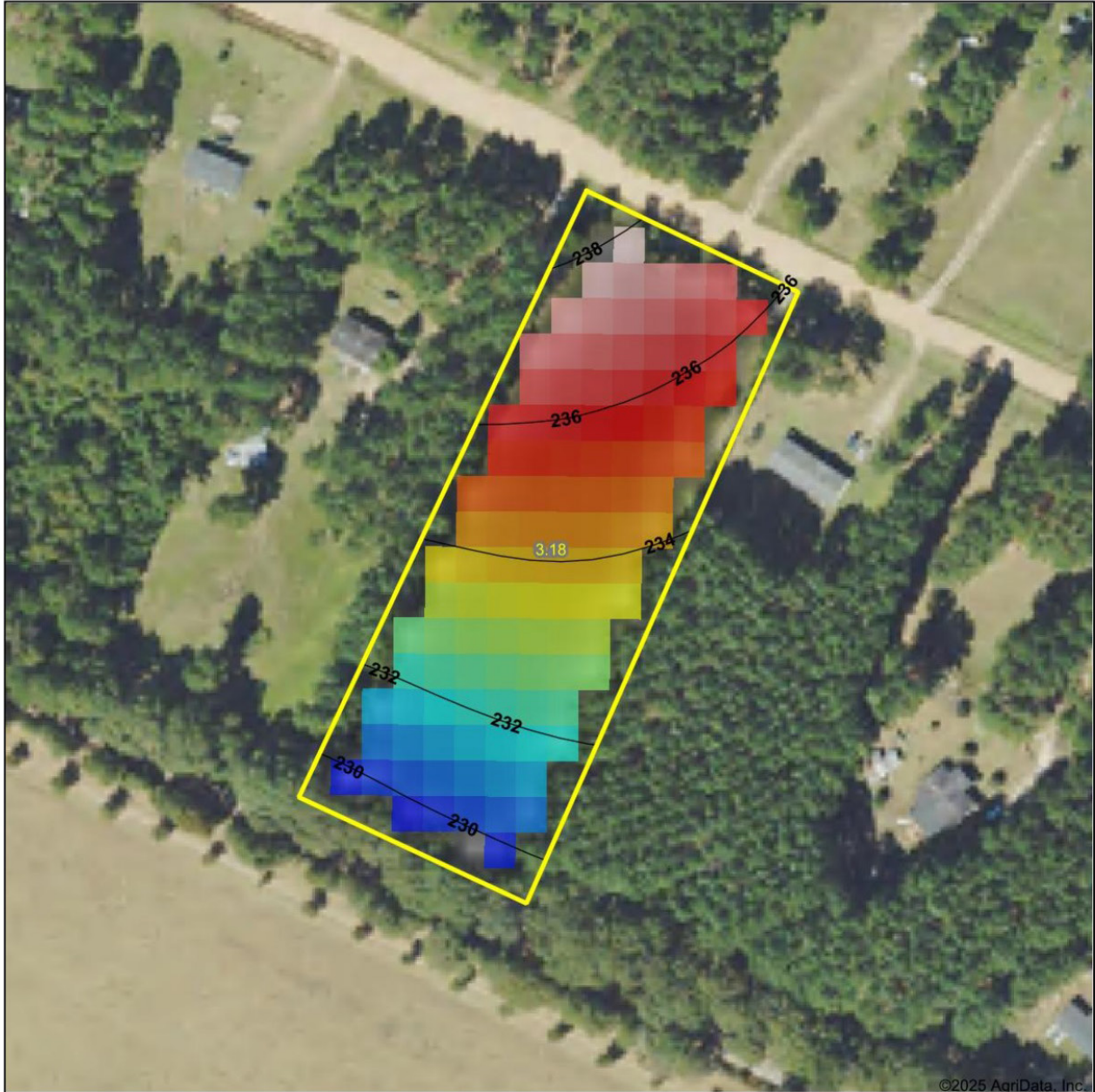


## DRONE MAP





# TOPOGRAPHY MAP



Maps Provided By:  
**surety**  
CUSTOMIZED ONLINE MAPPING  
© AgriData, Inc. 2023 www.AgriDataInc.com

Source: USGS 10 meter dem  
Interval(ft): 2  
Min: 228.8  
Max: 238.2  
Range: 9.4  
Average: 233.8  
Standard Deviation: 2.56 ft



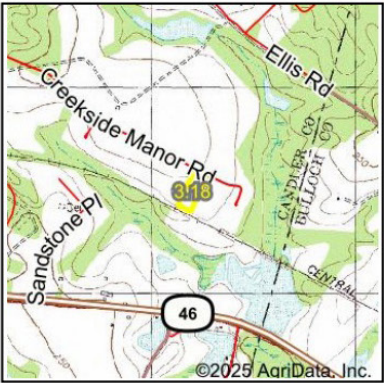
7/18/2025

Candler County  
Georgia

Boundary Center: 32° 23' 12.65, -81° 55' 59.64

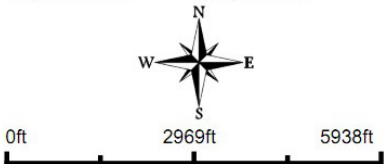


# WETLAND MAP



State: **Georgia**  
Location: **32° 23' 12.65, -81° 55' 59.64**  
County: **Candler**  
Township: **Pulaski**  
Date: **7/18/2025**

Maps Provided By:  
 **surety**  
CUSTOMIZED ONLINE MAPPING  
© AgriData, Inc. 2023 [www.AgriDataInc.com](http://www.AgriDataInc.com)



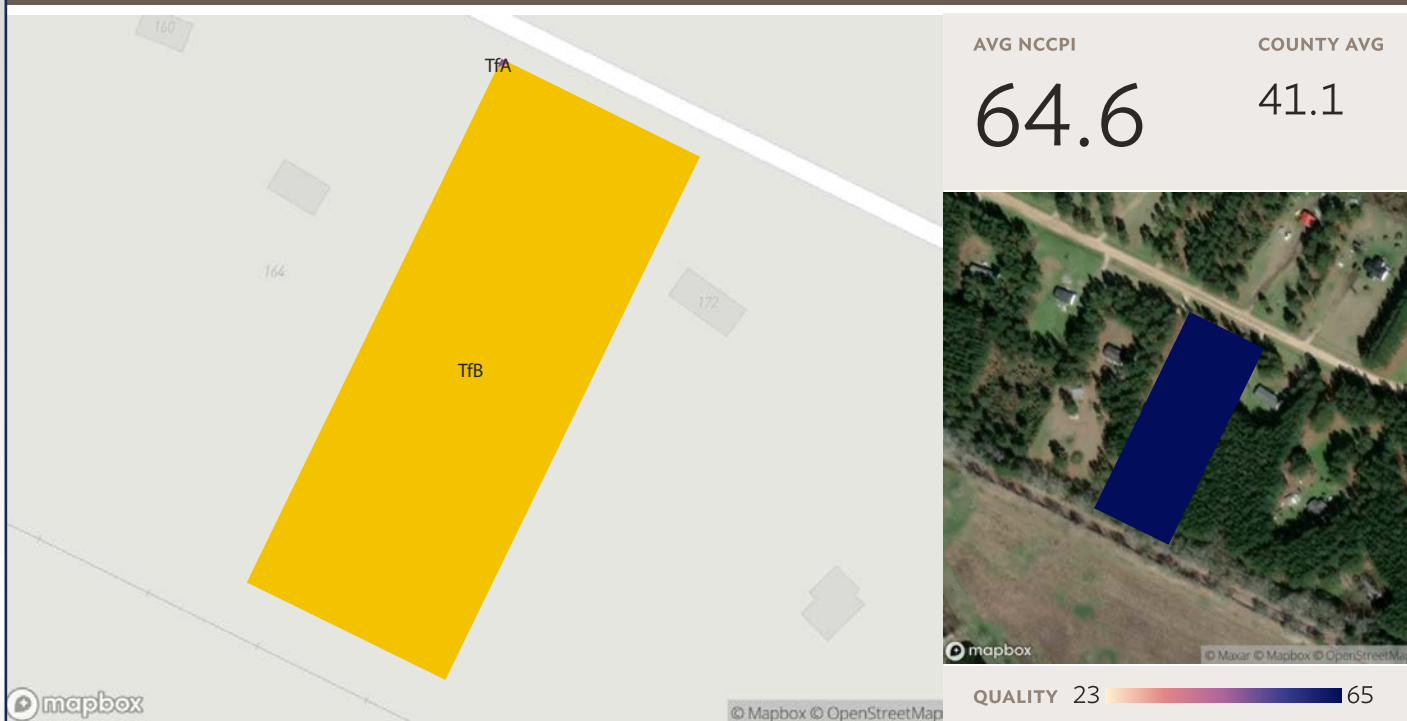
Classification Code	Type	Acres
	Total Acres	0.00

Data Source: National Wetlands Inventory website. U.S. DoI, Fish and Wildlife Service, Washington, D.C. <http://www.fws.gov/wetlands/>



# SOILS MAP

1 field, 3 acres in Candler County, GA



## All fields

3 ac.

SOIL CODE	SOIL DESCRIPTION	ACRES	PERCENTAGE OF FIELD	SOIL CLASS	NCCPI
TfB	Tifton loamy sand, 2 to 5 percent slopes	3.01	100.0%	2	Upgrade
TfA	Tifton loamy sand, 0 to 2 percent slopes	0.00	0.0%	1	Upgrade
		3.01			Upgrade



## A decorative graphic in the bottom right corner of the slide. It features a light gray background with a pattern of orange dots of varying sizes. Overlaid on this pattern are several thick, orange, curved lines that sweep across the area, creating a dynamic, abstract design.







# PHOTOS







# PHOTOS

