

Real Estate  
Auction

# COUNTRY CABIN ON **46± ACRES**

Jukes Road, Midville, GA  
Emanuel County



**BIDDING ENDS NOVEMBER 5<sup>TH</sup>**



**Rusty Lane, Auctioneer**

478.455.1861

rusty@southauctiongroup.com



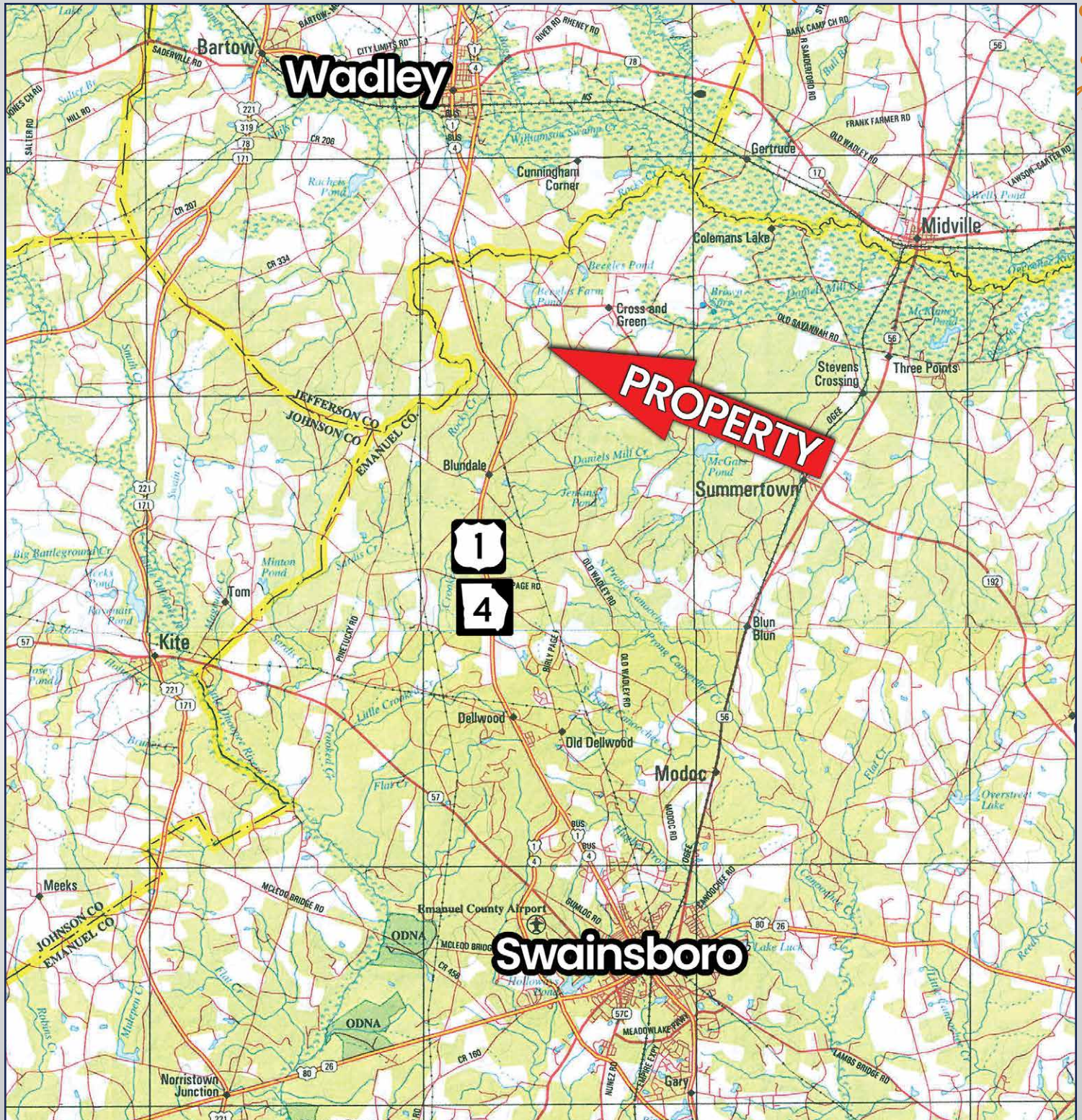
**SOUTH  
AUCTION**

**SouthAuction.com**





# PROPERTY LOCATION

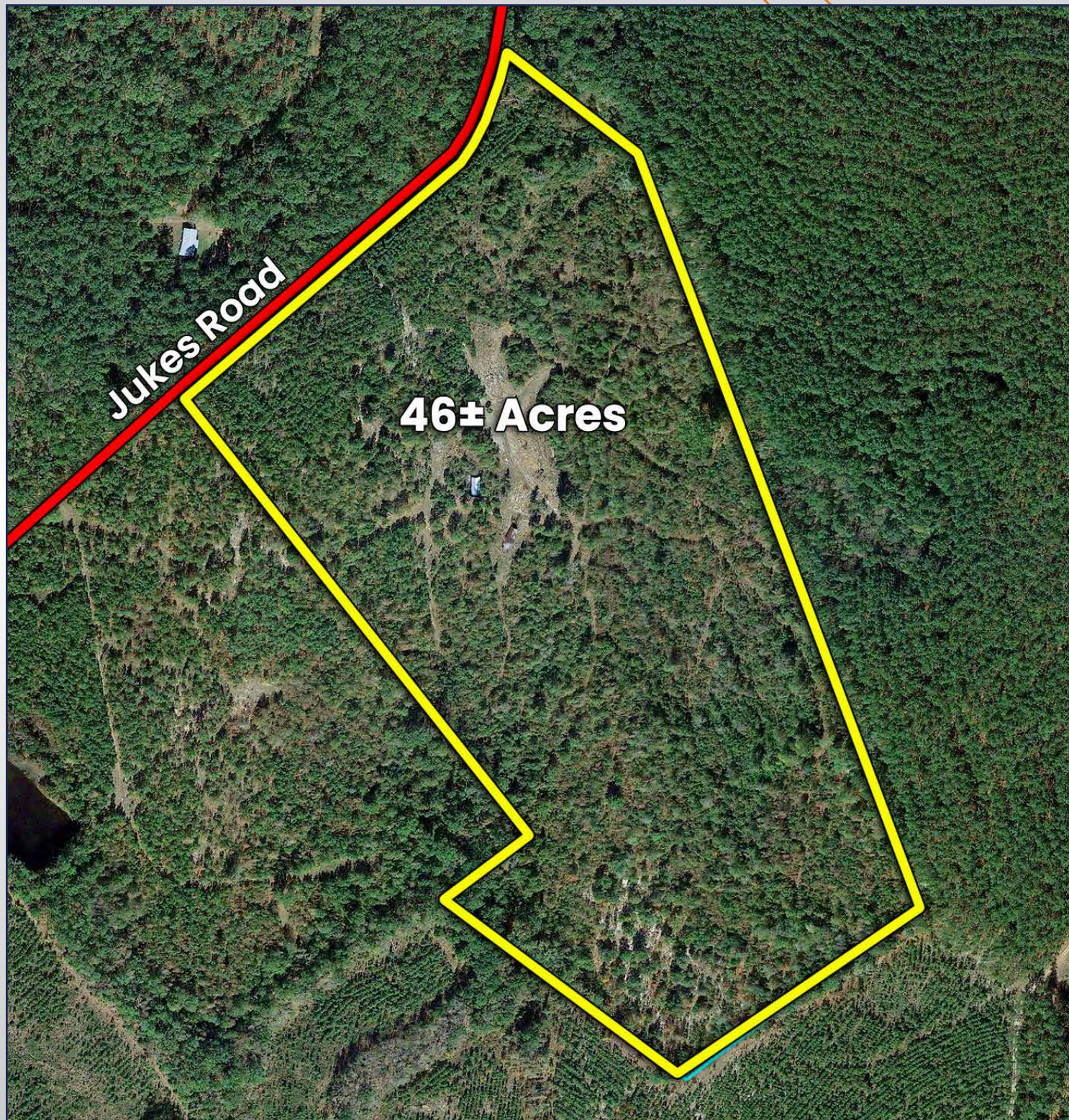


Visit [SouthAuction.com](https://SouthAuction.com) for Auction Details & to Place Your Bid.





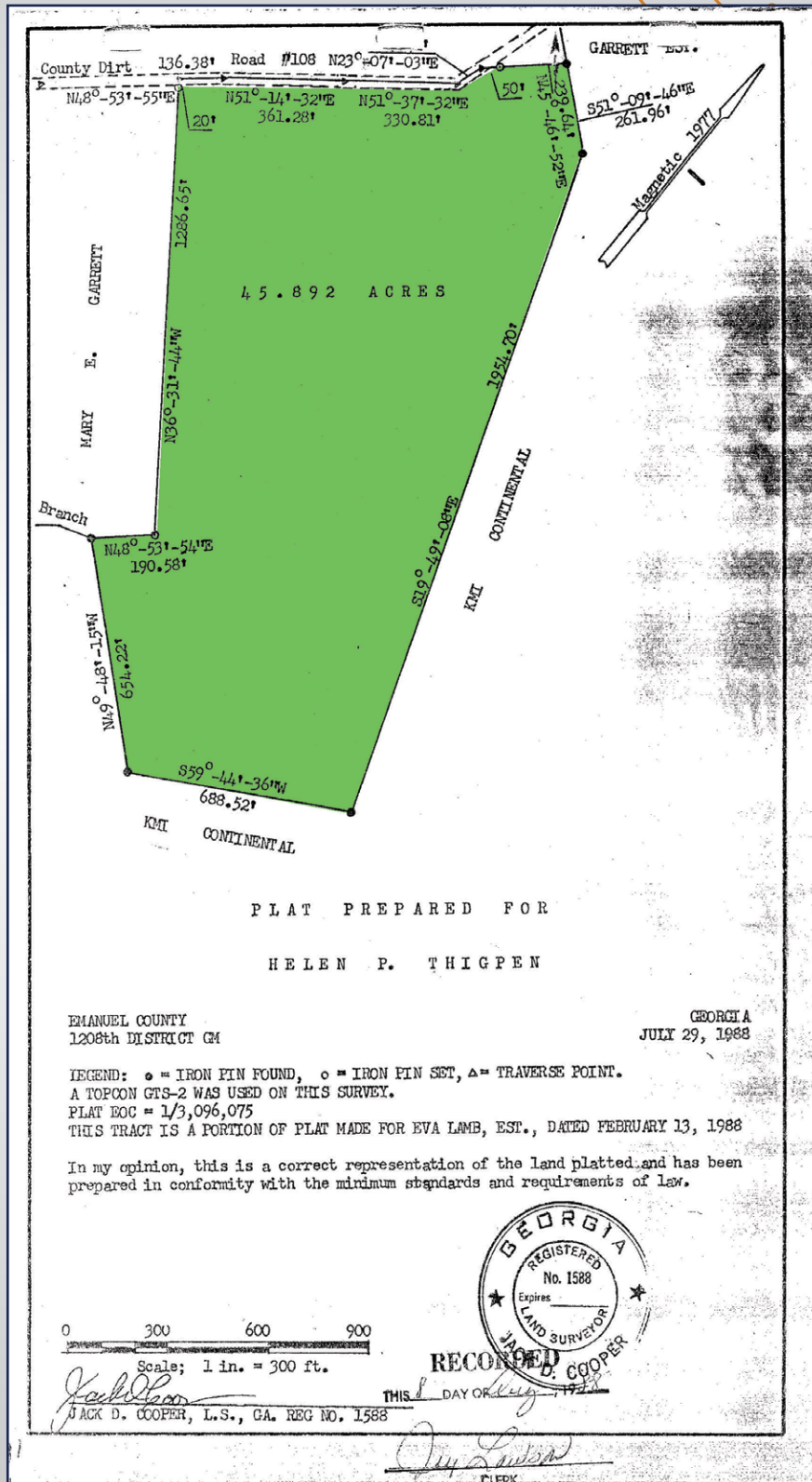
## AERIAL MAP







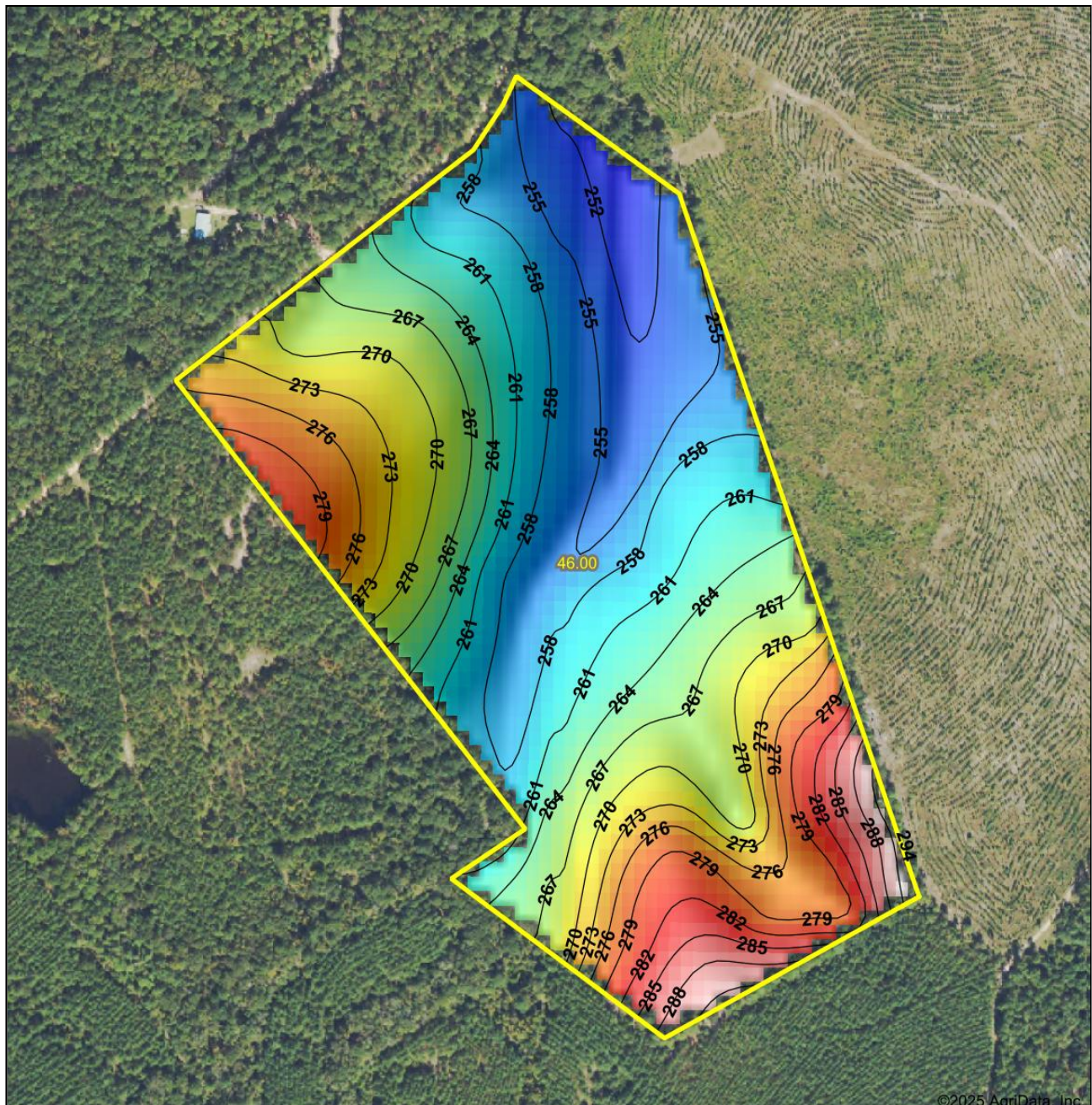
# PLAT MAP







# TOPOGRAPHY MAP



©2025 AgriData, Inc.

Low Elevation High

Source: USGS 10 meter dem

Interval(ft): 3

Min: 249.7

Max: 293.4

Range: 43.7

Average: 266.2

Standard Deviation: 9.74 ft

0ft 368ft 735ft



10/7/2025

**Emanuel County  
Georgia**

Boundary Center: 32° 47' 6.7, -82° 22' 9.32

Maps Provided By:

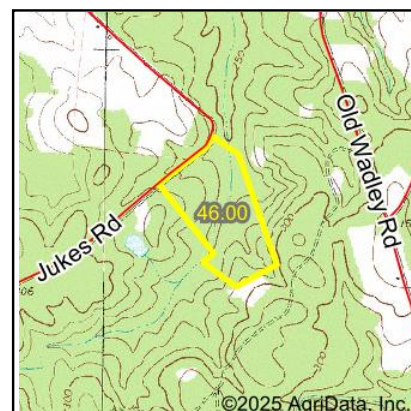
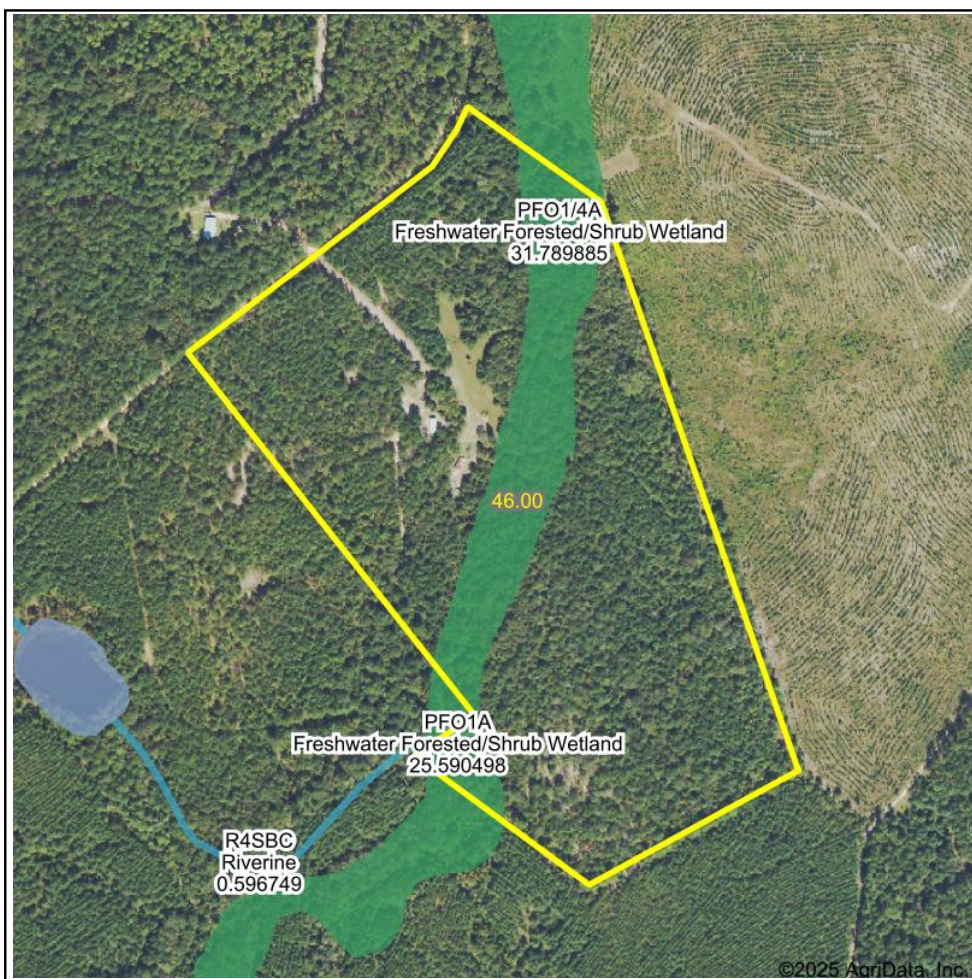


© AgriData, Inc. 2023

www.AgriDataInc.com



# WETLANDS MAP



State: **Georgia**  
 Location: **32° 47' 6.7, -82° 22' 9.32**  
 County: **Emanuel**  
 Township: **Summertown**  
 Date: **10/7/2025**

Maps Provided By:  
**surety**<sup>®</sup>  
 CUSTOMIZED ONLINE MAPPING  
 © AgriData, Inc. 2023 www.AgriDataInc.com



Classification Code	Type	Acres
PFO1A	Freshwater Forested/Shrub Wetland	3.90
PFO1/4A	Freshwater Forested/Shrub Wetland	3.34
Total Acres		7.24

Data Source: National Wetlands Inventory website. U.S. DoI, Fish and Wildlife Service, Washington, D.C. <http://www.fws.gov/wetlands/>





## PHOTOS







## PHOTOS

